

## Key Applications

SEM510 and SEM512 SCOM are widely used in road work, sub-base, parking lots, site development, water and sewer trench work, hills and uneven terrain



## Cab & Operation System

- Canopy standard, Cabin + A/C optional
- Big room, superior front, side and rear visibility
- SEM512/510 is hydrostatic compactor. The operation system is very simple, it just has two control levers, one for throttle control, another one is for forward/backward and brake control
- A/C with interior cycle/out side fresh air cycle selection for better defog capability
- Safety belt is standard



## Optional Accessories

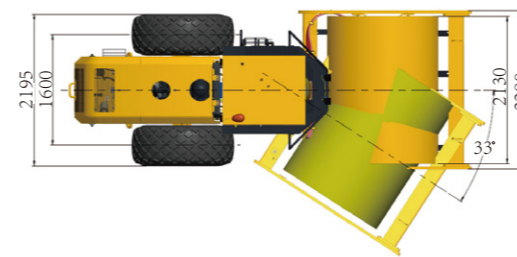
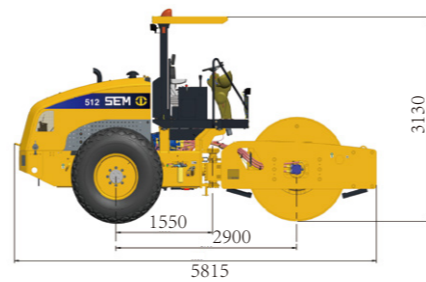
Configuration (O=Optional)	SEM510	SEM512
Soft CAB+AC	O	O
Compaction meter	O	O
Cold Start (Air Inlet Heater, -20C)	O	O
Rear rain wiper(Cab Only)	O	O
Radio (AM, FM) (Cab Only)	O	O
Pad Foot Shell Kit	O	O

## Specifications

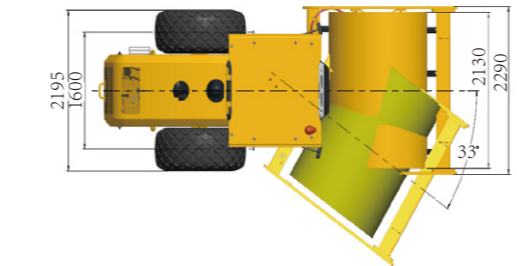
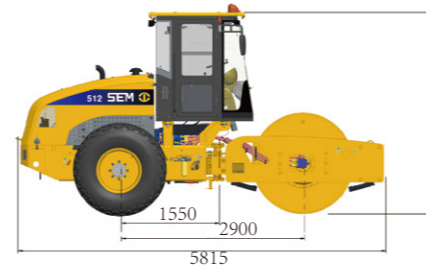
Items	Unit	SEM 510	SEM 512
<b>Engine Specification</b>			
Emission		China Stagell	China Stagell
Std Rated Power-Gross	kW	97.5	97.5
Rated Speed	r/min	2,200	2,200
<b>Operating Specifications</b>			
Machine Mass w/Std Config	kg	10,000	12,000
Weight at Drum w/Std Config	kg	5,900	6,900
Weight on Rear Axle	kg	4,100	5,100
Static Linear Load	N/cm	217	317
Max. Grade Ability w/o vibration	%	45	45
Articulated Angle	°	33±1	33±1
Turning Radius Inside Drum Edge	mm	5,990	5,990
Compaction Width	mm	2,130	2,130
<b>Travel Speed</b>			
Lo Range	km/h	0 to 5.5	0 to 5.5
Hi Range	km/h	0 to 12	0 to 12
<b>Hydraulic Cycle Time</b>			
Full Turn Time	s	6±0.5	6±0.5
<b>Vibratory System</b>			
Frequency-Hi/Lo	HZ	33/30	33/30
Amplitude-Hi/Lo	mm	1.8/0.9	1.8/0.9
Centrifugal Force-Hi/Lo	kN	215/130	245/150
<b>Dimensions</b>			
Machine Dimensions(L*W*H)	mm	5,815*2,290*3,130	5,815*2,290*3,130
Oscillation Angle	°	10±1	10±1
Wheelbase	mm	2,900	2,900
Tread Width	mm	1,600	1,600
Drum Width	mm	2,130	2,130
Drum Diameter	mm	1,590	1,600
<b>Tire Specs</b>			
Tire Pressure Setting	Mpa	0.35	0.35
<b>Service Refilling Capacity(L)</b>			
Fuel Tank		200	200
Engine Oil		10	10
Coolant		26	26
Hydraulic Oil Tank		22	22
Rear axle(Main reducer & final drive)		9.8	9.8
Rear axle-Differential Additive		0.3	0.3
Vibration pod(each side)		8.5	8.5

## Machine Dimensions

SEM512 dimension for standard configuration with sun canopy



SEM512 dimension for standard configuration with sealed cabin



Caterpillar (Qingzhou) Ltd. Address: No.12999 Nanhuan Road,Caterpillar Industrial Park, Qingzhou City,Shandong Province, Zip Code: 262500 P.R.China

© Materials and specifications are subject to change without notice. Featured machines in photos may include optional equipment. See your SEM dealer for available options.

© 2018 Caterpillar (Qingzhou) Ltd. All Rights Reserved. SEM Machinery, SEM, their respective logos, trade dress as well as corporate and product identity used herein, are trademarks of Caterpillar (Qingzhou) Ltd. and may not be used without permission.

Version: December 2018

# SEM510/512 Soil Compactor



※ Featured machines in photos may include optional equipment

## SEM510 SEM512

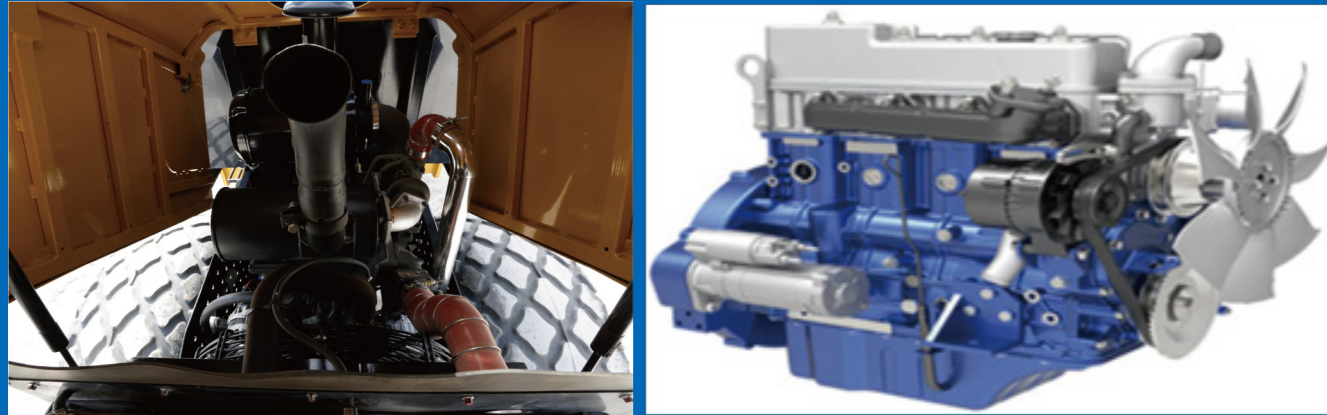
- **High Reliability:** Hydrostatic drive system with world class variable displacement piston pump and motors delivers leading in class reliability
- **High Productivity:** Dual amplitude and frequency vibration system enable the operator to achieve better compaction result
- **High Efficiency:** Up to 45% grade ability allows the machine to work efficiently on slop and uneven terrains

Website <http://www.semmachinery.com>



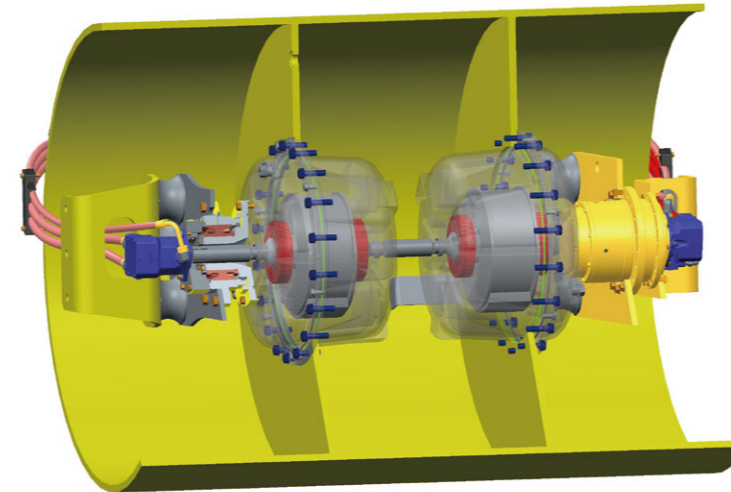
## Engine

- Weichai WP4 engine with turbo charger and ATAAC
- High fuel efficiency



## Vibration System

- Pod-style eccentric design
- Dual amplitude and frequency with world class piston pump and motor



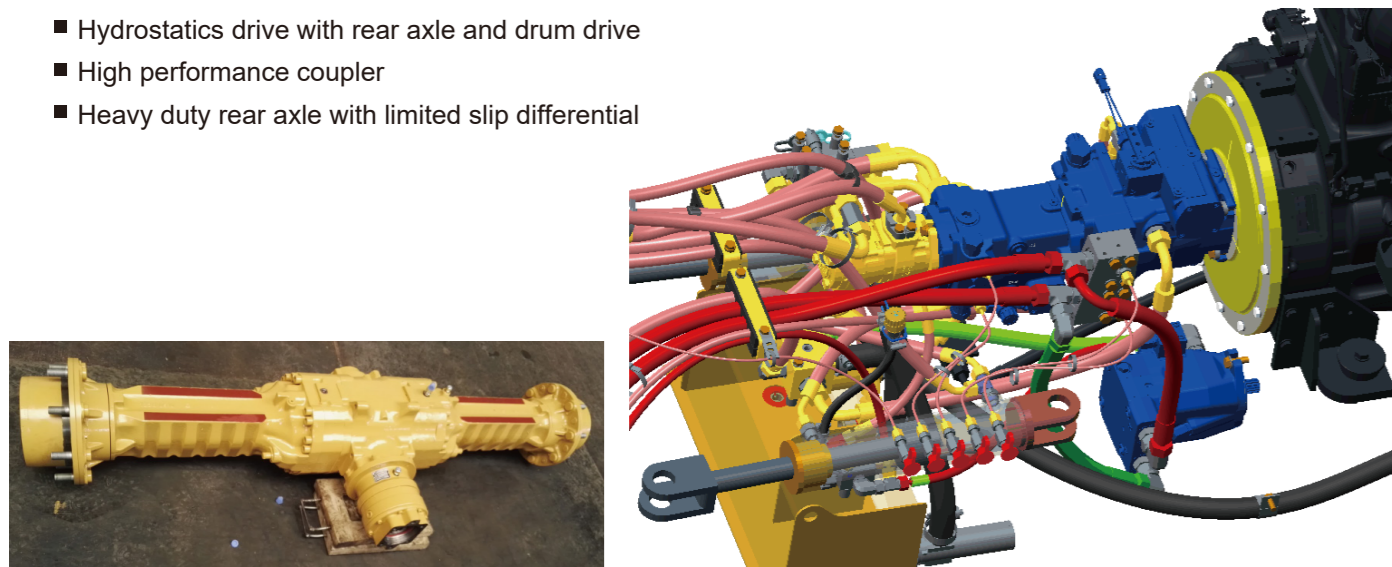
## Hydraulic System

- Improves efficiency by 20% vs. open center system
- Reduces oil contamination, extends life of hydraulic system
- Maintains higher system pressure with less energy loss
- Allows for simpler hose routings
- Requires smaller volume hydraulic tank, reduces maintenance cost



## Drive Train

- Hydrostatics drive with rear axle and drum drive
- High performance coupler
- Heavy duty rear axle with limited slip differential



## Cat® Product Link™

Cat® Product Link™ will support your business, and accurately convey information of the equipment to relevant personnel in a timely and effective manner for your better equipment management.



## Cooling System

- Modular cooling package design
- Up to 49°C ambient temperature cooling capacity

