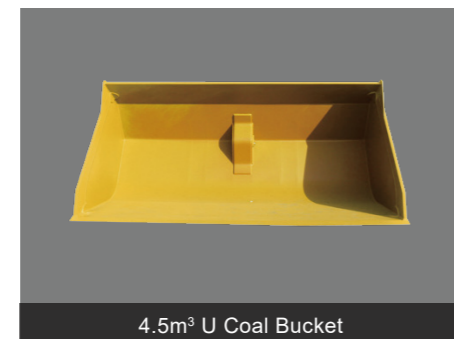
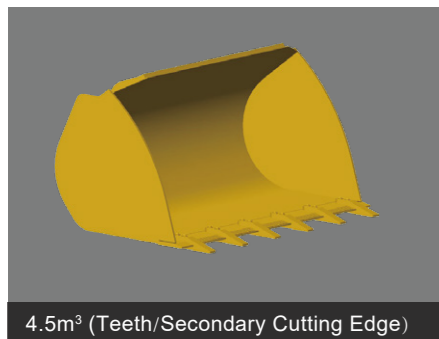
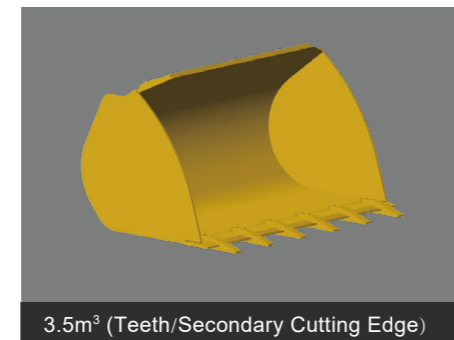
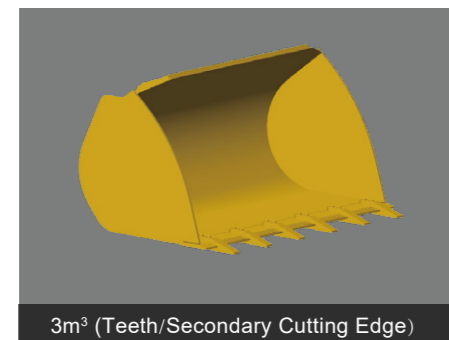
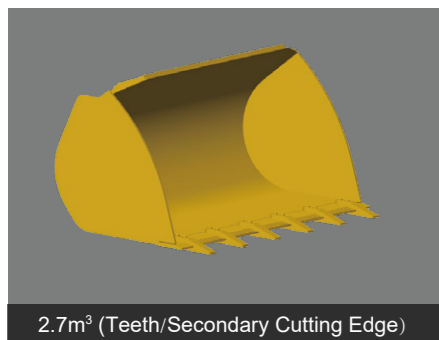


Machine Applications

- Landscaping, building, sewer/water in, local construction
- Ready mix cement/concrete products, quarry/stone, clay, recycled aggregate, sand and gravel
- Highway, street, tunnel, airport, residential commercial



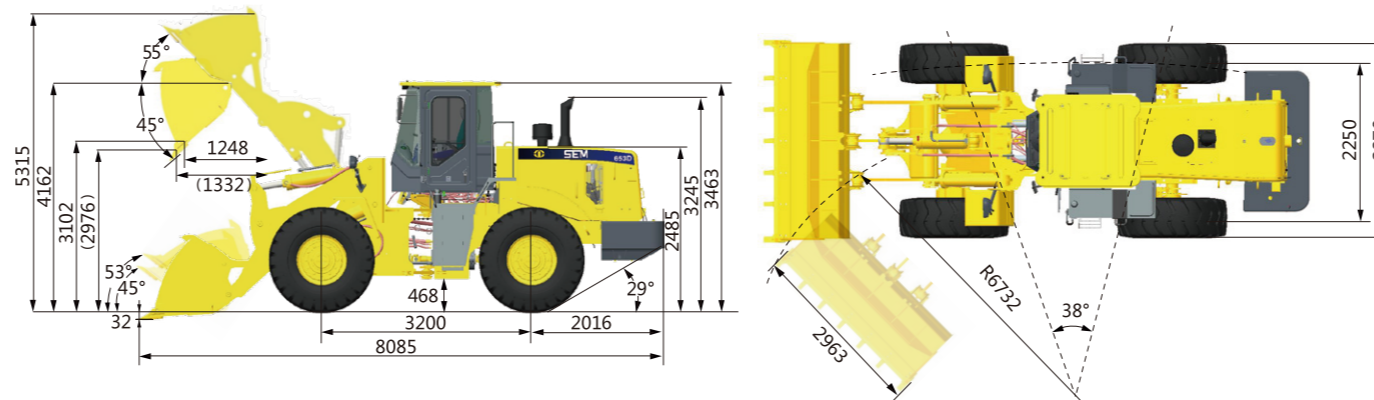
Work Tool Options



Main Specifications

Items	SEM653D		Items	SEM653D	
Main Specifications			Engine		
Rated Load	kg	5,000	Model		WD10G220E23
Operating Weight with Standard Bucket	kg	16,640	Rated Power	kW	162
Bucket Capacity	m³	2.6-5.5	Rated Speed	r/min	2,000
Wheel Base	mm	3,200	Displacement	L	9.7
Overall Dimension	mm	8,085*2,963*3,463	Implement Hydraulic		
Max. Drawbar Force	KN	171	Implement System Type		Open center
Breakout Force	KN	177	Boom Raise Time	s	5.1
Dump Clearance	mm	3,102	Hydraulic Cycle Time	s	9.3
			System Pressure Setting	Mpa	17
Transmission			Brake System		
Transmission Type		Countershaft, power shift	Service Brake		Dry&caliper,air to oil control
Transmission Gears		F4/R4	Parking Brake		Drum/shoe
Torque Converter Type		Single stage, 3 elements	Steering System		
Maker & Type		Tr200	System Type		Shared flow
Forward I/Reverse I		7.9/7.9	Steering Pump Type		Gear pump
Forward II/Reverse II		14/14	System Pressure Setting	Mpa	16
Forward III/Reverse III		22.9/22.9	Steering Angle (L/R)		38±1
Forward IV/Reverse IV		39.4/39.4	Tires		
Axle			Size		23.5-25
Main Drive Type		Spiral bevel gear, single stage	Type		PR
Final Drive Reduction Type		Planetary type,single stage	Layer		16
Rear - Oscillating +/-		±11	Textured Type		L-3/E-3

Machine Dimensions



► Note: the above dimensions are based on the standard configuration.

Caterpillar (Qingzhou) Ltd. Address: No.12999 Nanhuan Road,Caterpillar Industrial Park, Qingzhou City,Shandong Province, Zip Code: 262500 P.R.China

© Materials and specifications are subject to change without notice. Featured machines in photos may include optional equipment. See your SEM dealer for available options.
 © 2018 Caterpillar (Qingzhou) Ltd. All Rights Reserved. SEM Machinery, SEM, their respective logos, trade dress as well as corporate and product identity used herein, are trademarks of Caterpillar (Qingzhou) Ltd. and may not be used without permission.

Version: December 2018

SEM653D Wheel Loader



* Installed with Weichai engine
 ※ Featured machines in photos may include optional equipment

SEM653D

Product Advantage

- Reliability: Sturdy frame design for heavy duty, proved made in house transmission make usage life longer
- Productivity: 1st with bigger force and 2nd gear with fast speed conjoint usage deliver high productivity. Auto to ready function save your time for operation
- Fuel consumption: Low speed engine, E-fan and flow shared hydraulic system make lower fuel consumption
- Comfortable: Good visibility cab and low noise design with first class premium 5 directions adjustable seat make comfortable operation

Website <http://www.semmachinery.com>



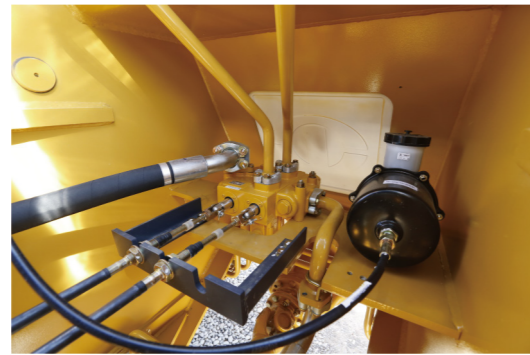
Engine

- Low speed engine and E-fan make fuel consumption better
- 3 stage air cleaner with 93% efficiency pre cleaner reduce earlier wearing, high efficiency fuel filter make engine work in good condition
- Cat technology damping mount reduce vibration failure



Efficient Hydraulic System

- Excellence modulation performance implement valve with mechanical control, make operation more accurately
- Full hydraulic load sensing steering and flow shared system save fuel and raise productivity, hydraulic cycle time is only 9.3s
- World class pump and Cat technology lines routing deliver better reliability



Operator Station

- Mould formed cab with all trims design and more vents with HVAC make operator feel better
- First class premium seat with suspension adjustable, arm rest and safety belt. Up-down, forward and reverse adjustable
- Cat technology damping mount reduce vibration failure
- Slide window, fresh air inlet system make environment better



Drivetrain

- SEM made in house counter shaft transmission reliable and high efficiency, core components reliable improvement
- One stage and 3 element torque converter deliver higher efficiency
- 1st gear higher draw bar and 2nd gear faster speed make penetration easier and move material faster



Cooling System

- High performance aluminum cooling package suitable for most of severe applications
- Oil cooler and radiator parallel design can balance heat load inside and suitable diversity applications
- Damping design reduce vibration failure



Solid Structure

- Validated by Cat technology FEA(Finite Element Analysis) and OMSA(On Machine Stress Analysis)
- Middle articulation frame less work space needed and reduce tire resistance
- Large spread hitch design in articulation section can stand more load



Serviceability

- Quick pressure test ports on HYD and brake lines make diagnose easier
- Large wing hood door make service easier, approach to air cleaner, fuel filter and oil filter
- Large spread hitch design in articulation section make operator easier to approach



Safety

- Slope switch make machine approach to hopper and pile in slope safety and easier
- High decibel Beacon and backup alarm make person around easy to attention
- 3 stage alarm system on panel
- 3 touch points entering and exiting cab make operator more safe

